

PRIMARY CARE MANAGEMENT DEVELOPMENT PROGRAMME

Newsletter 6 – April 2006

Welcome to the latest edition of your newsletter aiming to keep you informed about programme developments. Hopefully you are all working your way through Modules 1-3 and Module 4 was made available on the 12th March. Can we take this opportunity to remind you to submit your reflective statements and evidence at the end of each module using the module progression form which can be found on the programme website. Your facilitator needs these to carry out the assessment and give you your certificate of completion. If you are having any problems putting your portfolio together please contact your facilitator for advice. Another quick reminder – don't forget to log on to the programme website regularly to check for messages and updates.

New team member

We are pleased to welcome Sam Brinn to the team. Sam is on secondment with us for 3 days a week until 31st December 2006.

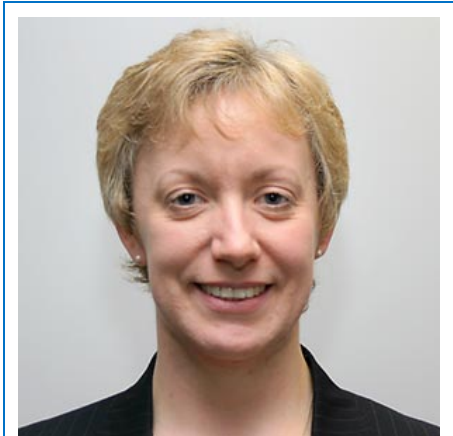
The areas that Sam will be concentrating on are:

- Co-ordination of the development and delivery of module materials
- Development and delivery of Masterclasses
- Co-ordination and development of all aspects of programme evaluation

Having found myself in a brand new PCG shortly after they came into being in April 1999 I have developed a career in improvement/modernisation across the NHS.

My roles have included local Project Manager for PCTs in waves I and III of the National Primary Care Collaborative; Programme Manager with the Orthopaedic Services Improvement Team of the NHS Modernisation Agency, working on the National Back Pain Collaborative, the Wheelchair Services Collaborative and later supporting organisations struggling with national Orthopaedic targets.

With the end of the Modernisation Agency I took on an improvement role in the Bath & Wiltshire Health Community focusing on the Long Term Conditions agenda. In addition to taking on a role with the Primary Care Management Development Programme with the NCGST I have retained part of my role in Kennet, North and West Wiltshire PCTs where my responsibilities include the implementation and development of a Community Matron service.



Sam Brinn
Programme Manager
Primary Care Management
Development Programme

Masterclass development

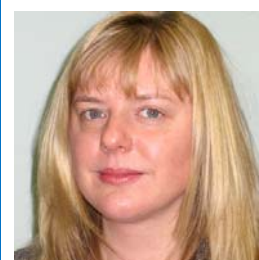
The next Masterclass will be on Choose & Book and Practice based commissioning and details will follow shortly. We are looking at how we can run these masterclasses most effectively i.e. online events, local seminars and at what topics would be most helpful to cover. If you have any comments or suggestions please get in touch.

Facilitator update

Firstly a welcome to two new facilitators, Victoria Churchill and Lyn Eustace who have taken over the role within their group. Secondly a thank you to Margaret Sutton who has agreed to take on a second Action Learning Set in the Manchester area.



Lyn Eustace



Victoria Churchill

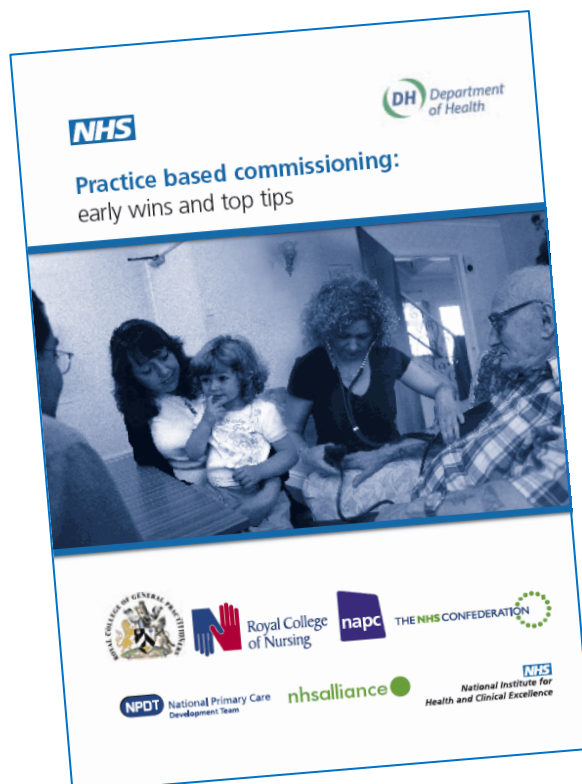
Our Health, Our Care, Our Say

For those of you who haven't found the time to work your way through the 227 pages of official document yet, the RCGP have produced an excellent summary which can be found at www.rcgp.org.uk/pdf/ISS_SUMM06_01.pdf

Practice Based Commissioning

A new DH clinical guide to Practice Based Commissioning (PBC) has been produced which gives best practice examples of how PBC can be used to redesign patient pathways. Practice Based Commissioning: early wins and top tips represents a "first base" checklist for practices, providing detailed ideas for nine clinical areas: COPD; dermatology, heart failure, long-term conditions, mental health, ophthalmology, orthopaedics, podiatry, and urology.

See www.dh.gov.uk/assetRoot/04/12/81/06/04128106.pdf



NPSA launch New Team-Based Practice Safety Tool

The new Manchester Patient Safety Framework (MaPSaF) is a tool developed to assist healthcare teams in assessing their progress in developing a safety culture. Developed by the National Primary Care Research and Development Centre (NPCRDC) MaPSaF uses “dimensions” of patient safety and for each of these describes how an organisation would mature through five levels of progression. These dimensions relate to areas where attitudes, values and behaviours about patient safety are likely to be reflected in the organisation’s working practices.

See www.npsa.nhs.uk/site/media/documents/1555_MaPSaF_Primary_Care.pdf for the primary care version.

Health Care Assistants (HCA) Toolkit

A new toolkit has been developed to support the integration of HCA’s into primary care. A launch event will take place in Birmingham on 19th May, 10-4.30pm. Cost of the conference is £50 but the first 100 applicants will receive a FREE place. You can register online at www.primarycarecontracting.nhs.uk/events or call Lisa Nibloe on 020 8481 8100.



This project has been funded through WIPP, who also support this programme.

Infection Control



The NHS Core Learning Unit has developed an online resource available for all staff in the NHS. It has information on infection prevention for both clinical and non clinical staff. The programme covers the critical aspects of infection prevention practice that everybody, regardless of their role, should follow. CLU Infection Control is available, free of charge, at www.infectioncontrol.nhs.uk

Other programmes available from the Core Learning Unit include:

- Introduction to today’s NHS
- Fire Safety
- Health & Safety awareness

See www.clpu.nhs.uk for more details

Engaging with Quality in Primary Care

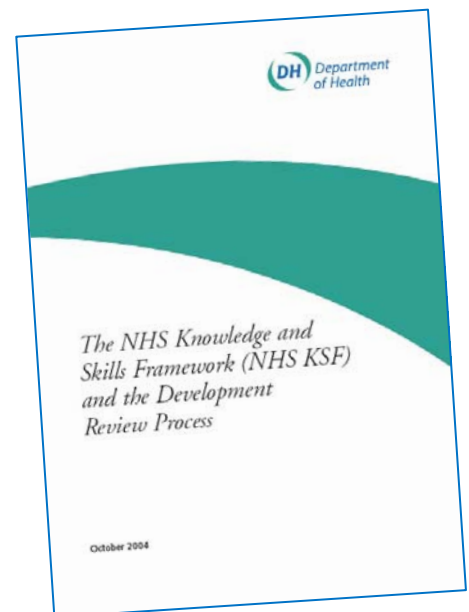


The Health Foundation is seeking applications for the Engaging with Quality in Primary Care award. The £2.4 million investment will fund up to six projects that will engage primary care clinicians in the quality improvement process and, by doing so, increase capacity for improvements in clinical quality in primary care in the UK. The deadline for outline applications is 31 March 2006.

For more information see www.health.org.uk/ourawards/awards/index.cfm?id=75

Skills for Health

Do you have a good job description and full Knowledge Skills Framework (KSF) that you are willing to share? The Skills for Health team would love to hear from you as they are mapping roles onto the career framework. Email to kerry.basnett@skillsforhealth.org.uk or Tel: 07768 996027



Contacts:

For any general queries regarding the Primary Care Management Development Programme please contact:

Donna Leggatt, Programme Administrator
Email Donna.leggatt@ncgst.nhs.uk or Tel 0116 295 2085

For queries relating to programme content please contact:

Jill Allen, Programme Lead
Email Jill.allen@ncgst.nhs.uk or Tel 07887 838749 or

Sam Brinn, Programme Manager
Email Sam.brinn@ncgst.nhs.uk or Tel 07909 965451